



Metropolitan Water Reclamation District *of* Greater Chicago

WMO Amendment Summary

100 East Erie Street
Chicago, Illinois 60611

On May 16, 2019, the Metropolitan Water Reclamation District of Greater Chicago (MWRD) amended the Watershed Management Ordinance (WMO), which regulates sewer construction within MWRD's service area and development within suburban Cook County. The WMO provides uniform stormwater management regulations to prevent future commercial, municipal, and residential development and redevelopment projects from exacerbating flooding and protects environmentally sensitive areas.

Effective 5/16/2019

Changes can be viewed in redline document at mwrld.org/wmo

- <https://mwrld.org/sites/default/files/documents/redline.pdf>
- Moved provisions to appropriate Articles or TGM
- Clarifications, definition updates, and removed redundancy
- New provisions
 - Exempting single-family homes outside flood protection areas
 - Exempting work in Lake Michigan under Corps and OWR regulation
 - Errors and omissions, conflict of interest clauses
 - No upper acreage limit for stormwater trading

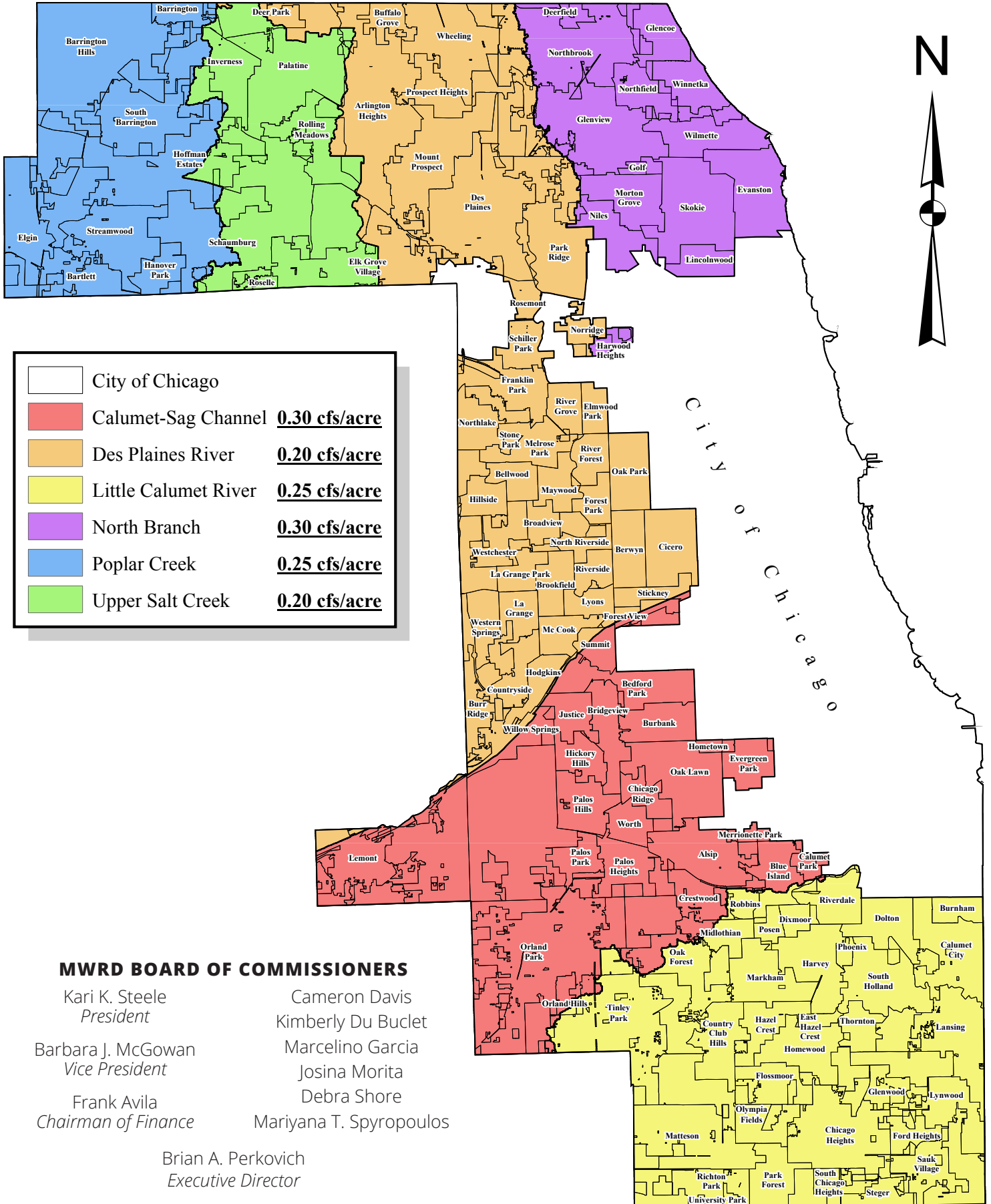
Effective 1/1/2020

- Watershed Specific Release Rates
 - 0.20 cfs/acre for Des Plaines River and Upper Salt Creek
 - 0.25 cfs/acre for Little Calumet River and Poplar Creek
 - 0.30 cfs/acre for Calumet-Sag Channel and North Branch
- Updated Bulletin 70 rainfall data from ISWS
- Redevelopment allowances and methodology

Future WMO Amendment Topics:

- Expanding offsite volume control and detention trading
- Flood protection areas: "Article 6 deep dive"
- Additional clarifications as needed
- Review of Permit Fees

Watershed Planning Areas



MWRD BOARD OF COMMISSIONERS

- | | |
|---|-------------------------|
| Kari K. Steele
<i>President</i> | Cameron Davis |
| Barbara J. McGowan
<i>Vice President</i> | Kimberly Du Buclet |
| Frank Avila
<i>Chairman of Finance</i> | Marcelino Garcia |
| | Josina Morita |
| | Debra Shore |
| | Mariyana T. Spyropoulos |
| Brian A. Perkovich
<i>Executive Director</i> | |