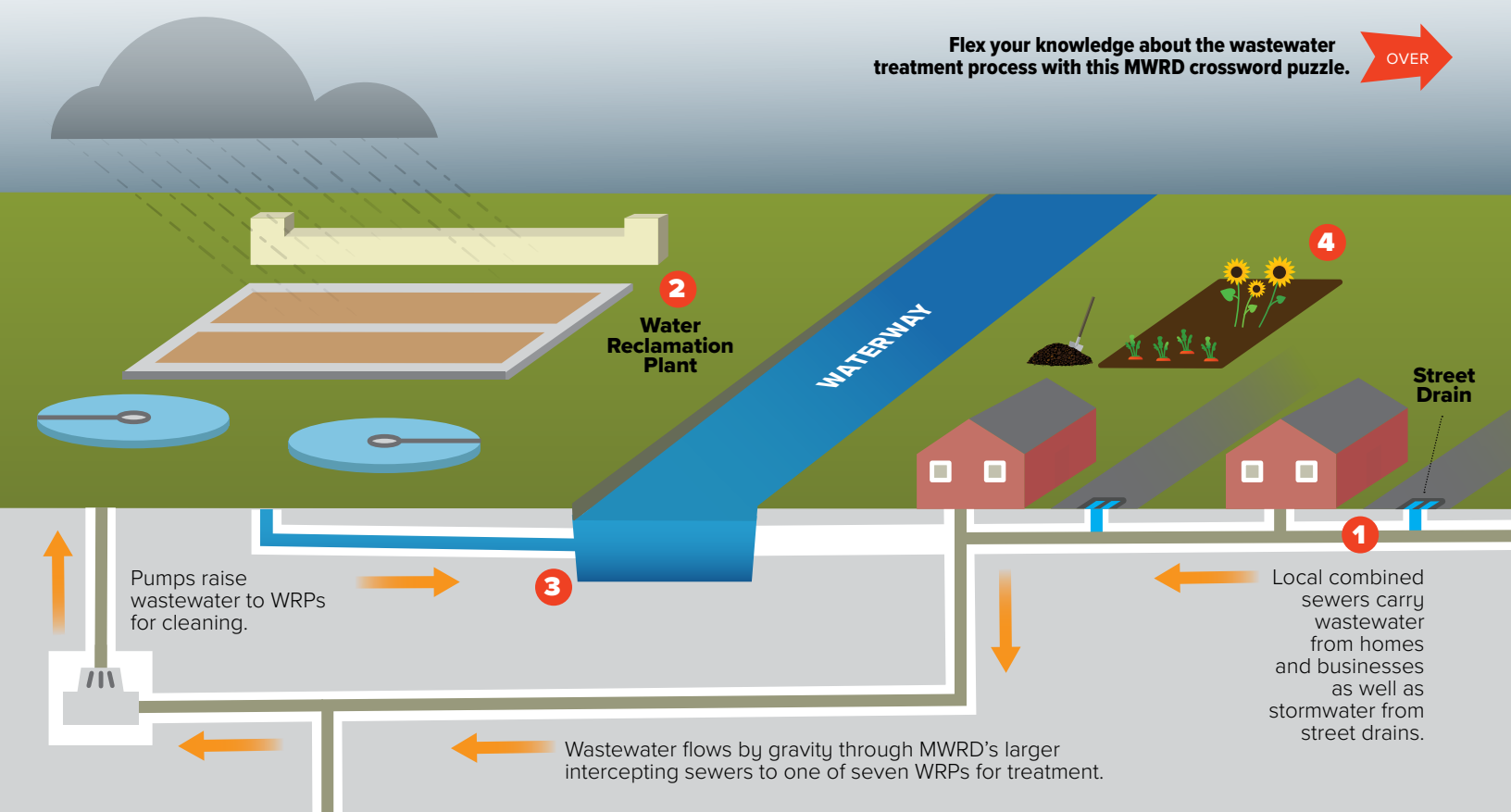




# WHAT HAPPENS WHEN YOU FLUSH THE TOILET?

Flex your knowledge about the wastewater treatment process with this MWRD crossword puzzle. **OVER**



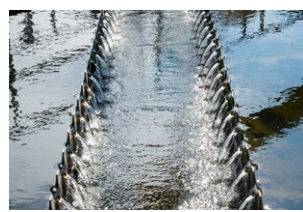
**1** In older communities, water from drains, toilets and rainstorms enter the same sewers.



**2** Wastewater is treated (cleaned) at one of seven Metropolitan Water Reclamation District of Greater Chicago (MWRD) water reclamation plants (WRPs).



**3** After water is treated at a WRP, the clean water is sent to downstream waterways which eventually flows into the Mississippi River.



**4** Solid materials removed from the water at the WRP are processed to kill harmful bugs then dried. This product is called "biosolids." Biosolids enrich soil and enhance plant growth. We use biosolids to make compost.



## MWRD'S SEVEN WATER RECLAMATION PLANTS

**Stickney Water Reclamation Plant**  
Cicero

**O'Brien Water Reclamation Plant**  
Skokie

**Egan Water Reclamation Plant**  
Schaumburg

**Hanover Park Water Reclamation Plant**  
Hanover Park

**Calumet Water Reclamation Plant**  
Chicago

**Kirie Water Reclamation Plant**  
Des Plaines

**Lemont Water Reclamation Plant**  
Lemont

**Puzzle Instructions** Use the clues below to fill in the correct answers for the boxes going across and down. There is one letter for each box.

**Across**

- 1 Wastewater treatment works using the same processes that occur naturally in rivers to clean water, incorporating physical and biological processes with a combination of air, gravity and \_\_\_\_\_.
- 2 In secondary treatment, a community of microorganisms help remove \_\_\_\_\_ material from the wastewater.
- 3 We see the benefits of our work resulting in increased recreation on the \_\_\_\_\_, such as kayaking and canoeing, a rebounding aquatic habitat and increases in fish species.
- 4 \_\_\_\_\_ treatment adds a final layer of treatment before water is released into neighboring waterways. The Calumet WRP uses a chlorination/de-chlorination application process and the O'Brien WRP uses an ultraviolet (UV) disinfection system.

**Down**

- 5 In primary treatment, aerated grit tanks and settling tanks use physical and \_\_\_\_\_ means to remove fats and oils and to separate solids from the water.
- 6 If you live within our service area, the water that goes down your toilet, sinks and \_\_\_\_\_ eventually comes to us to be cleaned.
- 7 We treat wastewater from homes and businesses throughout our 882.1-square-mile service area, in addition to \_\_\_\_\_ from some communities.
- 8 Wastewater and stormwater flows through local sewers into our \_\_\_\_\_ before flowing to WRPs where we clean the water and recover resources.
- 9 The goal of wastewater treatment is to reduce \_\_\_\_\_ in water.

**Word Bank**

stormwater interceptors

microorganisms waterways

drains tertiary

contaminants mechanical

organic



MWRD.ORG  
**WATER WELLNESS**  
 RESOURCE CENTER  
 Social media icons for Facebook, X, Instagram, YouTube, and LinkedIn.

A crossword puzzle grid on a blue background. The grid consists of white squares for letters and blue squares for empty space. Clues are numbered in the top-left corners of the starting squares for each word. The clues are: 1 Across (10 squares), 2 Across (8 squares), 3 Across (8 squares), 4 Across (8 squares), 5 Down (5 squares), 6 Down (5 squares), 7 Down (5 squares), 8 Down (8 squares), and 9 Down (8 squares). The puzzle is designed to be filled with words from the word bank.

ANSWERS