



Metropolitan Water  
Reclamation District  
of Greater Chicago

# Multiplication Chart

0 - 12

SUGGESTED  
LEARNING  
LEVEL:  
**2nd - 4th**



## Math can be fun, and multiplication plays a key role in many math equations and problem solving.

This multiplication table goes up to the 12s! Students in all grade levels may find this resource useful, but it is especially

helpful for students in grades 2-4. Keep this handy tool at school and leave one at home.

<b>X</b>	<b>0</b>	<b>1</b>	<b>2</b>	<b>3</b>	<b>4</b>	<b>5</b>	<b>6</b>	<b>7</b>	<b>8</b>	<b>9</b>	<b>10</b>	<b>11</b>	<b>12</b>
<b>0</b>	0	0	0	0	0	0	0	0	0	0	0	0	0
<b>1</b>	0	1	2	3	4	5	6	7	8	9	10	11	12
<b>2</b>	0	2	4	6	8	10	12	14	16	18	20	22	24
<b>3</b>	0	3	6	9	12	15	18	21	24	27	30	33	36
<b>4</b>	0	4	8	12	16	20	24	28	32	36	40	44	48
<b>5</b>	0	5	10	15	20	25	30	35	40	45	50	55	60
<b>6</b>	0	6	12	18	24	30	36	42	48	54	60	66	72
<b>7</b>	0	7	14	21	28	35	42	49	56	63	70	77	84
<b>8</b>	0	8	16	24	32	40	48	56	64	72	80	88	96
<b>9</b>	0	9	18	27	36	45	54	63	72	81	90	99	108
<b>10</b>	0	10	20	30	40	50	60	70	80	90	100	110	120
<b>11</b>	0	11	22	33	44	55	66	77	88	99	110	121	132
<b>12</b>	0	12	24	36	48	60	72	84	96	108	120	132	144



## How to use this multiplication table:

↓

X	0	1	2	3	4	5
0	0	0	0	0	0	0
1	0	1	2	3	4	5
2	0	2	4	6	8	10
3	0	3	6	9	12	15
4	0	4	8	12	16	20
5	0	5	10	15	20	25

→

1. Pick the numbers you want to multiply from the first column and the top row.

Example:  $2 \times 3 = ?$

2. Then follow their paths until they meet. The number where they meet is your answer.

X	0	1	2	3	4	5
0	0	0	0	0	0	0
1	0	1	2	3	4	5
2	0	2	4	6	8	10
3	0	3	6	9	12	15
4	0	4	8	12	16	20
5	0	5	10	15	20	25

Answer:  $2 \times 3 = 6$

### Let's practice!

Using the example in the multiplication table shown at the right, solve the following.

$3 \times 4 = 12$

$5 \times 2 = \underline{\quad}$

$2 \times 4 = \underline{\quad}$

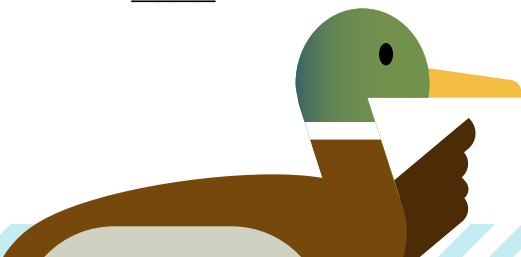
$4 \times 4 = \underline{\quad}$

$0 \times 2 = \underline{\quad}$

$3 \times 5 = \underline{\quad}$

X	0	1	2	3	4	5
0	0	0	0	0	0	0
1	0	1	2	3	4	5
2	0	2	4	6	8	10
3	0	3	6	9	12	15
4	0	4	8	12	16	20
5	0	5	10	15	20	25

**Tip:** You do not need to write on the table. Simply use your fingers or a pencil to follow the paths until they meet.



## Does the MWRD use math in its work?

Yes, math is essential to several Science, Technology, Engineering, Arts, and Math (STEAM) career roles at the MWRD. Staff must know how to use it correctly to help

solve problems, operate certain machinery and tools, and to monitor and maintain operations for their programs, services, and activities.



**Metropolitan Water  
Reclamation District  
of Greater Chicago**



## What is the MWRD?

Established in 1889, the Metropolitan Water Reclamation District of Greater Chicago (MWRD) is an award-winning, special purpose government agency responsible for wastewater treatment and stormwater management in Cook County, Illinois.